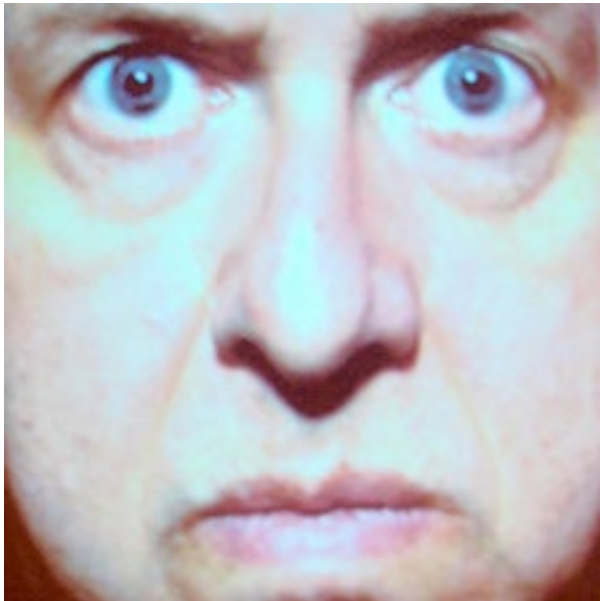


ARTIST BIOGRAPHY

Bruce Charlesworth



Bruce Charlesworth (born 1950) is an artist, writer, and filmmaker. He is the writer of many scripts and short fiction works and is the director of the feature-length film *Private Enemy-Public Eye*. His work has been shown at the Musée National d'Art Moderne in Paris, London's Tate Gallery, The American Film Institute, the Whitney Museum of Art, the National Museum of American Art in Washington, D.C., and the Museum of Contemporary Art in Chicago, among many other museums and galleries. He is currently an Assistant Professor of Film/Video/New Genres at the University of Wisconsin, Milwaukee. Charlesworth received a BA in Art from the University of Northern Iowa in 1972 and an MFA in Painting from the University of Iowa in 1975.