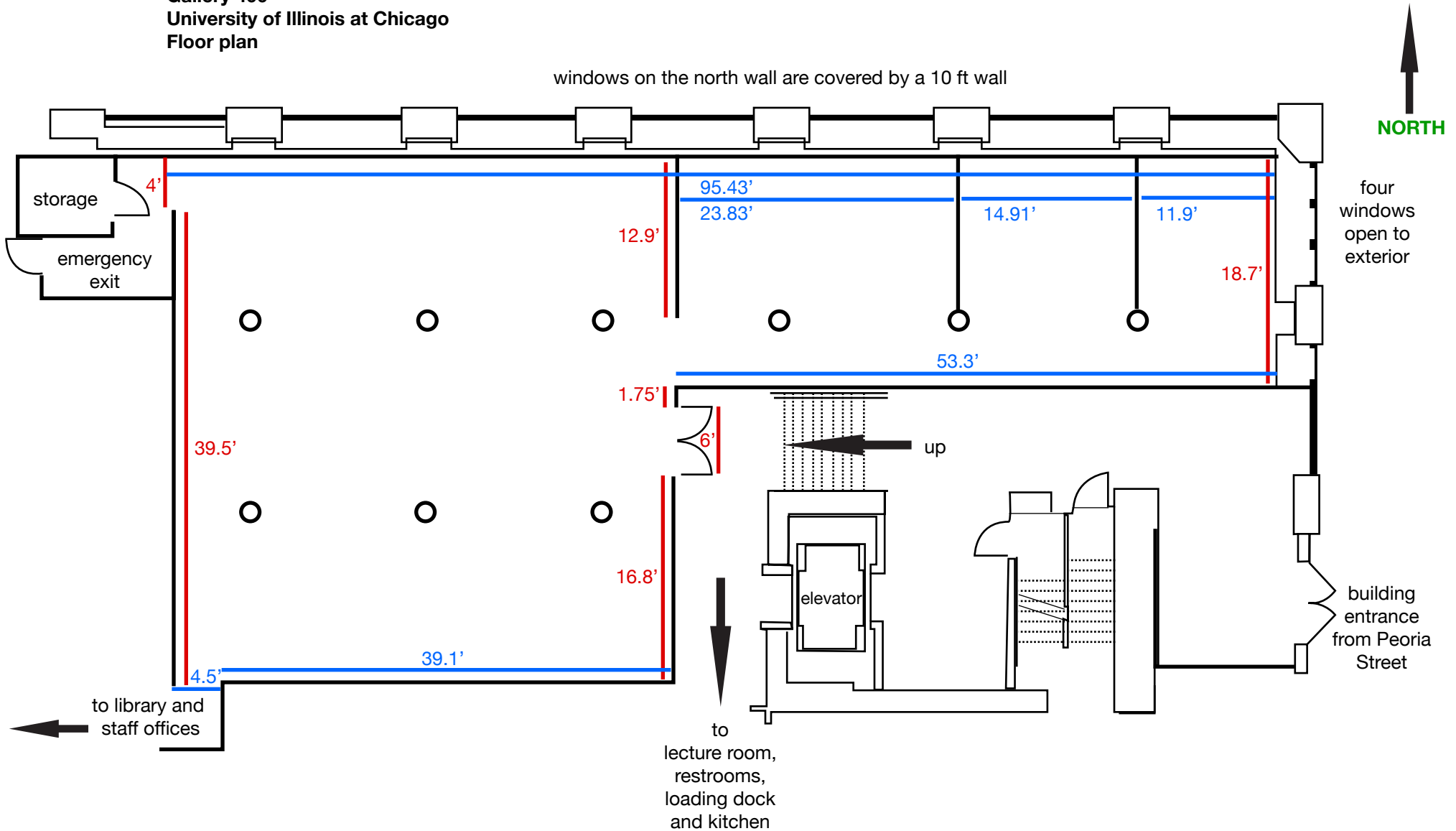


Gallery 400
University of Illinois at Chicago
Floor plan



Gallery address: 400 South Peoria St.

Walls are drywall over plywood

Floors are plywood 4'x4' tiles

Ceilings are 12' high

Lighting is 90W floods on track throughout

Square footage: 2893 sq.ft. (Square west space 1897 sq.ft. / Rectangular east space 996 sq.ft)